

# Opportunity for Leasing Commercial Property Grantsville Outreach Center

28 Hershberger Lane  
Grantsville, Maryland 21536

(Located across from community recreational park  
less than 1 mile from Interstate 68)

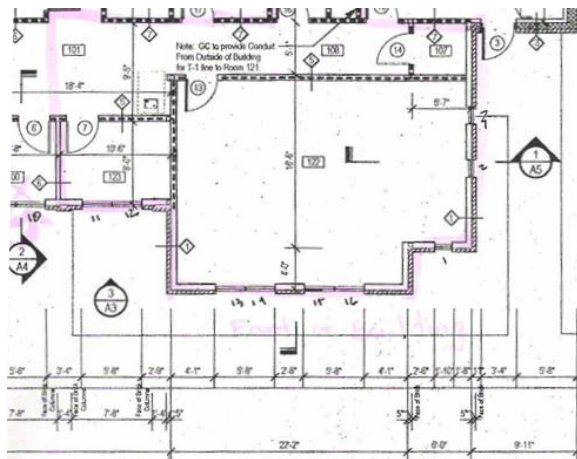
Directions: Take Exit 19 from Interstate 68 to MD-495 (Yoder St)  
Turn left onto Ravine Street and right onto Hershberger Lane



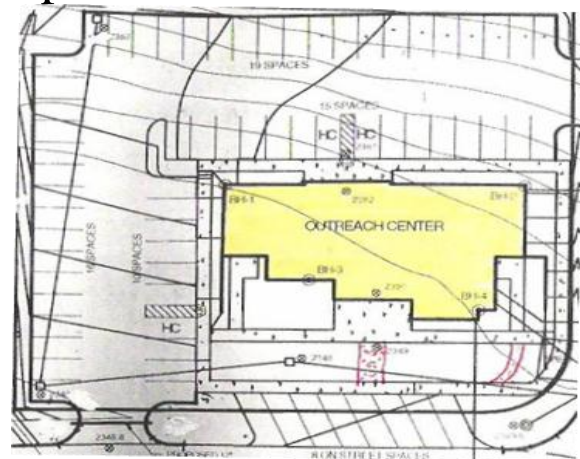
Solid Attractive Exterior



Spacious Interior Rooms



Schematic Shows 1,722 sq ft



Sufficient Spaces for Parking

Contact:

Garrett County Community Action Committee, Inc. (GCCAC)

104 East Center Street, Oakland, Maryland 21550

Phone local 301-334-9431 x6165 Phone toll free 1-888-877-8403 Fax 301-334-8555

Email [swatkins@garrettcac.org](mailto:swatkins@garrettcac.org)